

TRIMLEY ST MARY RECORDER'S REPORT 2017

TRIMLEY ST MARY

This is the forth Recorder's Report and 2017 has been a very lively year for Trimley St Mary particularly relating to the new housing which will be covered later in this report. The warm temperatures throughout the summer months were superb which contrasted with the cold wintery weather experienced with snow falling on 10th December 2017! Last time snow was recorded here was in 2012.

Churches



St Martin's Church Trimley continues to be the Parish Church for Trimley St Mary. As from 1st July 2017 the Revd Caroline Allen was appointed as the Rector of the Benefice of Walton and Trimley. The church has held several events throughout the year including Prayer, Bible study Groups, Café 10, Plant and Cake Stalls and Trimley Open Gardens Saturday 17-Sunday 18 June 2017. This very popular event was in aid of St Martin's Church and the programmes were £5.00 which included admission to all the gardens taking part.

Specific services held during 2017 at St Martin's included: 1 Baptism, 3 Weddings, 9 Funerals and 4 Internement of Ashes were held in the church this year. <http://www.stmartinstrimley.org.uk>

St Cecilia's Roman Catholic Church no longer exists. Since the church was sold in October 2015 a new business Hi Fi Business 'Signals' has bought the property which opened on 4th May 2017

Trimley Free Church (see left hand picture): This church (set up by a local benefactor Mary Dains) is part of Mary Dain's Mission and Holiday Fund Charity. Charity No: 253412. Its aim is to "*advance the Christian religion by means of mission work on the buildings (church and schoolroom etc) and Manse at Trimley St Mary. To provide relief or assistance for Christian religious workers living within the local area who are in need of rest or recuperation*"

Pastor Derek Court (and his family live in the Manse (house) just across the path from Trimley Free Church) where bible study meetings on Thursdays from 7.15 – 8.30pm are held. A 'Pop In' Community shop started at the end of last year and is open on

Trimley St Mary



Mondays from 10-4.00pm -182 High Road, Trimley St Mary. IP11 0SS (in the church). This is run by volunteers from the BASIC charity via their shop in Walton which provides a service to Walton and the Trimleys. <http://www.suffolkchurches.co.uk/trimleymartin>

Mariners Free House



Continues to thrive and maintains its reputation for good pub food with helpful and cheerful bar staff. In addition real ale is served - mainly from local brewers. 60 specialist gins are also available! A range of craft lagers, local ciders and a good selection of wine and Prosecco at reasonable prices are also served. Music is held on Sunday lunchtimes and continues to be popular. On TripAdvisor it has maintained a rating of 4.5 stars too.



This year another addition (see picture on the left) – a green marker buoy was added to the corner of the front garden of the Mariners. The pub also has many examples of maritime paraphernalia giving it a very nautical feel. [Ever since the Egyptians lit the beacons to warn the Mariners of rocks, navigation marks have been keeping mariners safe over the centuries]



Christmas time at the Mariners was a very lively affair with a large beautifully lit Christmas tree outside which gave a wonderful welcome as you entered Trimley St Mary. The pub organised a 'Santa Stroll' which raised a substantial amount of money for St Elizabeth Hospice – a local hospice.

<http://www.marinersfreehouse.co.uk;>
<http://suffolkcamra.co.uk/pubs/pub/975>

Trimley Carnival 2017 theme 'Country Fair'

The theme for the Trimleys Carnival 2017 was 'Country Fair'. The procession started at Faulkeners Way, Trimley St Mary at 1.00pm and travelled along the High Road and ended at Trimley Social Club in Trimley St Martin. It was a glorious day the sun was shining and it was lovely and warm too. Turnout was excellent with many people lining the roads and the atmosphere was lively and vibrant. Gates to the Social Club ground opened at 1.00pm and closed at 6.00pm. There was a £1.00 entry per person.



Prizes: 1st place float: Twinkletoes Nursery;-2nd place float: 8th Felixstowe Scouts Group
1st place small Procession float: Cowling's Dance Group; 2nd place small procession float: Woodland Pals Pre School;-Best turned out majorette/dance troop: Urban Allstars. **Some pictures below:** The first three taken along the High Road and the latter ones taken in the grounds of Trimley Social Club in Trimley St Martin.



It is hoped that the Recorders of Trimley St Mary and Trimley St Martin will have a stall at the carnival next year....watch this space!

Parish Allotments



The Parish Allotments are still well used and lots of produce grown including many types of vegetables – potatoes, beans, pumpkins/ squashes, tomatoes etc; raspberries, strawberries, and fruit from apples, pear and plums trees. This was in addition some beautiful flowers which graced the passage to the garden allotments. The allotments were open for visitors to see on the biannual Flower Show which will be included later in the report.

There are currently five and a smaller half sized allotment available for hire.

The Welcome Hall <http://www.trimleystmary.onesuffolk.net/welcome-hall>



The Welcome Hall continues to be looked after by a small group of volunteers and a booking Clerk (overseen by the Parish Council). Booking Phone number: 07824 309712 Office hours: 9.00am to 5.00pm Monday to Friday only. (Ms Cheryl Smith).

Polling for Trimley St Mary residents is held at the Welcome Hall and a General Election held on 4 May 2017.

Activities/Meetings in the Hall include:
Yoga, Basket weaving, Felixstowe festival

Musical theatre, Yoga Chant and Medication Group, LL Dance Group, Choir, Monthly Meetings for WI and Parish Council. The Hall is used for private functions too.

The **General Election Results for Felixstowe North and Trimley 4 May 2017:**

Stuart Bird (C) 1,295*, Dave Ablitt (L) 692, David Coutts (UKIP) 306, Andrew Marfleet (LD) 235, Jonathan Mulbery (G) 106. Maj: 603. T/out: 34.7%. C hold.

As can be seen by the above results turnout was significantly lower than the UK referendum in 2015

Trimley St Mary Parish Council

<http://www.trimleystmary.onesuffolk.net/welcome-to-trimley-st-mary-parish-council/>

The Parish have reinstated the **village newsletter 'Form the Horses Mouth'** in addition to some updating of the village website. The Councillors have had another very busy year and are very concerned about the heavy traffic along the High Road and the increased forecasts arising from the port related expansion, rail and further large scale developments. The reason for this concern is the High Road's close proximity to the Port of Felixstowe and its classification as a primary route in supporting the A14 dual carriage way.

In conjunction with the Friends of the Earth the Parish Council (PC) carried out some air quality tests in the village to measure the air quality and provide pollution analysis. The results which can be viewed on the PC website showed that the levels of pollution were within the limits to be considered safe.

Speeding indicating devices have been set in the past year in different locations along the High Road to discourage excessive speeding limits.

A Public meeting was held at the Welcome Hall on **Friday 20 May @ 7.00pm** to discuss the future of the village. An excellent turn out from the villagers who were able to express their concerns about the future – which included further developments, traffic, pollution, the threat of the environment particularly as this area has high quality agricultural land.

Below is the Parish Map : [Copyright 2018 Trimley St Mary Parish Council]



The Parish Council meets monthly on the first Wednesday in every month with the meetings starting at 7.00pm and held in the Welcome Hall. There are no meetings for August. A vacancy exists on the Parish Council and during the past year two women have joined the Parish Council.

Trimley St Mary village precept for 2017/2018 is £35,000 a rise of £1300 in the past year.

Housing

According to **Rightmove** (the UK's largest property portal) the number of houses **sold in Trimley St Mary was 59 houses (2017)**. Of these majority of sales in Trimley St. Mary during 2017 were **29 detached properties** -the highest price sold for £486,000 'White Lodge' 172 High Road a flat roofed house' see below (which apparently won an award when it was built in the 1960's); and the lowest detached property in Dains Place sold for £210,000; **17 semi - detached houses were sold** – the highest for £265,000 in The Avenue a 3 storey house, and **13 terraced houses** were also sold during 2017.

Trimley St. Mary, has an overall average price of £233,256 (slightly up on last year's price) and is similar to properties sold in Felixstowe, but more expensive than nearby Trimley St. Martin (£216,918). As reported last year 175 High Road (Gaymers Lane) sold for £395,000 in April 2017 -house on right middle picture. House on the left (middle picture) has been rented and the access to Gaymers Lane continues to be very muddy. However, a further building plot is also going up for sale in Gaymers Lane which I'll report on in my next report!



White Lodge 172 High Road



175 High Road

Houses/Flats for rent. Houses and flats rent easily in this area as there is good access to Felixstowe or Ipswich (road/rail/bus). Currently there are no properties to rent at the end of 2017

New Homes – New developments!



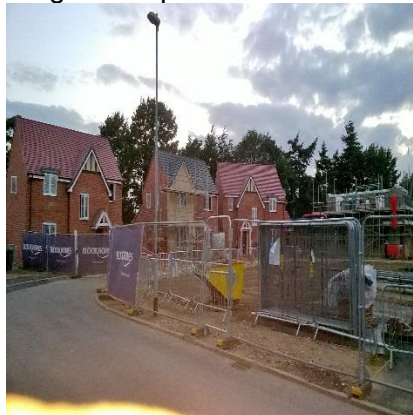
BEFORE

Last year's pictures 2016 Bloor Homes New Development Site Thurmans Lane

Picture 1 is a view from The Josselyns, of one of the development areas in Trimley St Mary.

Picture 2 shows the entrance to the above housing development. .

Picture 3 shows the fields off Thurmans Lane at the rear of Thomas Avenue and The Josselyns at Trimley St Mary which are now being developed with homes.



Pic 1 entrance to development

Pic 2 later stage of building work

Pic 3 some of new 2 bedroom bungalows

AFTER 2017 Bloor Homes new development site and continuing...

Despite of the opposition from the many residents and Parish Council who expressed concerns about the new housing. Bloor Homes is building 98 homes on an eight-acre field between Thurmans Lane and The Josselyns on the Farmlands estate. The company have created a brochure giving details of the type of houses which will be built which the Recorder has obtained a copy. Included in the development were six 2 bedroom bungalows and all sold very quickly. (See above picture 3). As this was a large building site the village and residents living in the Josselyns area have seen a huge increase in construction traffic this year. Further developments are planned and the recorder will update and include in the annual report next year.

Grade 2 listed buildings

Within the parish of Trimley St Mary there are 13 Grade 2 listed buildings and these include St Mary's Church and the Three Mariners Pub (the latter have been covered in this and former newsletters).

In my future reports I intend to cover other Grade 2 listed buildings within the area. Last year I included the Limes, (192 High Road).

This year I started looking at **Trimley House, 180 High Road** which belonged to a local benefactor **Mary Dains** who also established Trimley Free Church –see page 1 (which it appears was built in the grounds of her house).

This house originally one house has been split into two (180 High Road and 178 High Road at the rear) although both are called Trimley House. (**Only** 180 High Road is a Grade 2 listed building- I'm unclear why 178 hasn't been included too but hopefully the additional work I'm exploring will provide the information). It is anticipated my research into Mary Dains will have completed the research by the end of 2018 so can be included in the 2018 annual report.



Trimley House 180 High Road (now a semi - detached house) was last sold according to the land registry in August 2010 for £585,000. Since then the new owners have apparently made huge alterations to the house and hopefully I can report on these alterations next year. Trimley House was listed on 25 May 1983 Grade 11; Source Historic England Source ID 1377102; English Heritage Building ID: 285004. The above photographs were taken from the Rightmove website.

The rear of Trimley House (178 High Road) was last sold in March 2014 for £360,000 according to the land registry. Photos on Rightmove website.



<http://www.britishlistedbuildings.co.uk/england/suffolk/trimleystmary> a website for all listed buildings can be viewed and details of listed buildings in Trimley St Mary can be found on the above site.

Trimley Marshes



A delightful nature reserve created from arable land alongside the river Orwell in 1990 as a result of the expansion of the Port of Felixstowe. There is a good circular 6 mile walk (starting from Searson's farm) to the marshes with a number of hides around the nature reserve- Little Egrets, Avocets and Bar Tailed Godwits + numerous other birds can be observed. In addition there is plenty of sailing activity on river Orwell.

Trimley Marshes Free Annual Open Day took place on Sunday 21st May 2017 which was well attended. Also available was the opportunity to try out and buy binoculars in the perfect testing environment!

<http://www.suffolkwildlifetrust.org/reserves/trimley-marshes>

As part of the **Great British Beach Clean** was held on **Saturday 16 September 2017 from 0-4.00pm**. Participants were required to register as a volunteer.

<https://www.mcsuk.org/beachwatch/beach/trimley-marsh/event/2017-09-15>

Trimley St Mary Primary School



Trimley St Mary Primary School, is a state non-denominational school for boys and girls aged from 4 to 11 and has 350 pupils. The school has a website: <http://www.trimleystmary.uk.org>

The Headteacher is still Christina Ashford, and Colin Monk remains as Chair of the Governors. It continues to maintain its 'Good' Ofsted Rating following an inspection on 27 & 28 January 2016.

School Dates:

Spring Term: 3rd January 2018- 29 March 2018

Summer Term: 16th April -24 July 2018

Autumn Term: 6th September 2018

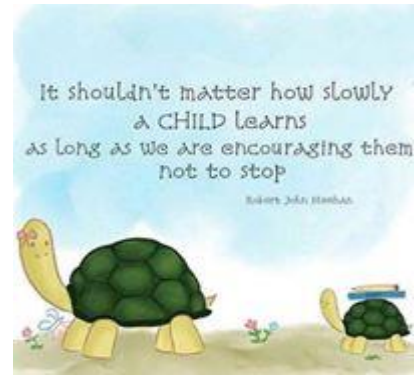
Holidays:

Half Term: Monday 12th February -16th February (one week); 1st May (bank holiday); 28th May- 2nd June (inclusive)

Spring: 2nd April- 13th April (inclusive)

Summer: 25th July -6th September (inclusive)

Tiddlywinks Day Nursery



Tiddlywinks Day Nursery was established in 1992 by Gill Stephen, and based in Trimley St Mary, Felixstowe. It is a private day nursery offering both full and part time childcare for ages 3 months to 11 years. They are registered and have a 'Good' inspection rating by Ofsted. The nursery accepts government funding for 2, 3 and 4 year olds. There is a separate baby room and fully equipped outdoors areas- see middle picture.

TRAINS



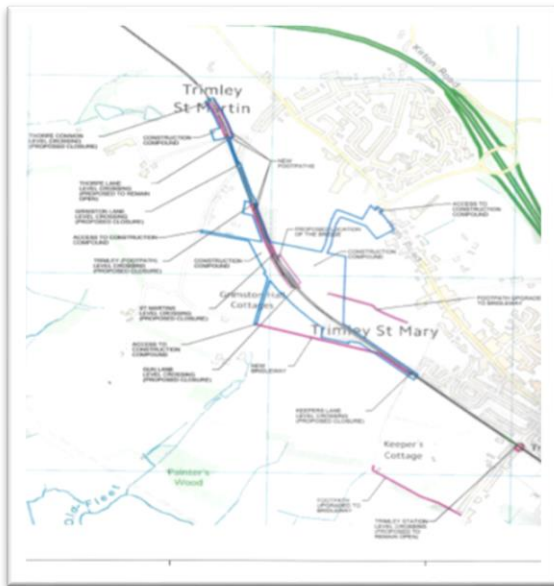
Trimley St Mary Train Station

Trains are operated by Abellio Greater Anglia and currently run throughout the day between Ipswich and Felixstowe.

Railway Crossings and Footpaths Changes

Below is a copy of the **Proposed Rail Crossings and Footpaths** – this picture is not clear but the recorder has a larger copy which will be deposited in Ipswich Record Office. An electronic copy can also be seen on the link below

http://www.hwa.uk.com/site/wp-content/uploads/2017/09/nr12_consultation-summary-report.pdf



Following on from my last report the proposed railway crossings and change in footpaths are now being introduced which will affect Trimley residents. There have been concerns from the public and the Parish Council have voiced their fears with the current changes.

Network rail have stated that as ‘*more trains running on the Felixstowe branch line, six pedestrian level crossings in the Trimley area would pose a greater risk and impact the reliability and efficiency of train services. In order to reduce this risk and impact to passenger and freight services, we need to close six pedestrian level crossings in the Trimley area. This improvement work will require changes to public rights of way at these level crossings. The changes it is felt will help will bring about the following benefits:*

- Improve the safety of level crossing users
- Deliver a more efficient and reliable railway, which is vital in supporting the regional and UK economy
- Reduce the ongoing operating and maintenance cost of the railway
- Improve reliability of passenger and freight services
- Help to reduce congestion on the A14 – each freight train equates to around 60 heavy good vehicles

As plans and works are now in place the changes and details of the new bridges and footpaths will be included in next year’s report.

Trimley Station Community Trust



Trimley Community Trust have had a busy year and have been fundraising to save the only Victorian station in Suffolk. On Sunday 5 March 2017 the annual Model Railway Exhibition and Swap and Meet took place at Trimley St Martin Memorial Hall from 10.00am – 4.30pm. Although it was cold outside the weather was warm in the hall. A good turn out and a most enjoyable day for model railway enthusiasts.

Model Rail Exhibition Swap and Meet



Charity Curry Night

A Charity Curry Night was held on 10 September 2017 at the Bombay Nite Indian restaurant in Walton. Tickets were £20/head and sold very quickly. £700 was made for Trimley Station Community Trust.

According to the Trimley Station Community Trust website the following historical information has been included see: - <http://www.trimleystation.org>

Other News in the Trimley St Mary during 2017:

Trimley St Mary Open Gardens June 17th – June 18th 2017



This extremely popular biannual event was held this year on Saturday June 17 from 10-4.00pm and Sunday June 18 from 12-5.00pm raising funds for Trimley St Martin Church. Residents in Trimley St Mary and Martin opened their gardens for the public and what a superb day it was. Unfortunately the recorder was unable to attend but her colleague in Trimley St Martin spent a superb day photographing many beautiful gardens and flowers. 10 gardens were on display in Trimley St Mary and 5 gardens within Trimley St Martin. The 50 Allotments were also included Refreshments and cream teas were available in Trimley St Martin Church; in the Welcome Hall a selection of plants and herbs were available for sale ; a plant sale and garden adviser

from Goslings was available along with a variety of crafts and a quilting display. The Mariners had an Open Garden Special lunchtime menu on production of the programme. Goslings Farm Shop and Garden Centre with the Sausage Shop (both located in Trimley St Martin) sponsored the event; the Flying Lady from Trimley St Mary supplied the helium filled marker balloons; Suffolk Coastal sponsored the printing of the programme and Thompson and Morgan Ipswich supplied the 'Butterfly Hunt' gifts.

Hot Rods and Custom Car Rally 27 August 2017

The annual car rally set off from Trinity Park in Ipswich at around 11am, and arrived on the prom from 11.30am onwards. Cars travelled through the Trimleys and many enthusiasts watched the custom cars on the High Road at Trimley St Mary. Unfortunately this will be the last year of this rally as the attraction will be relocated to Rutland Showground. The car cruise to the coast was part of the National

Association of Street Clubs (NASC) Street Rod National event. Over 200 displays of vehicles took part with many driving along the High Road to Felixstowe.

Below are some of the pictures taken on the day



Local News

20 March 2017 at 11.15pm approx

A Vauxhall Vectra careered through a garden wall and ploughed into a house on the High Road, Trimley St Mary, the house is on the junction of Station Road and the High Road. A female driver ran away from the scene after the incident and the vehicle had apparently been stolen earlier during the day. Suffolk Fire and rescue Service, Police and the Ambulance Service attended. No-one was injured in the crash but the homeowners in their 70's were in their home. It was reported that it was the third time someone had crashed into the owners property but this was the worst outcome of the trio.



This item was reported in the Ipswich Star on 21 March 2017

18 April 2017 A man from Trimley St Mary admitted to making 280,000 indecent images of children and admitted to four offences when he appeared before Ipswich Crown Court. He was released on conditional bail for a pre-sentence report. On 14 July John Spur was made the subject of an Indefinite Sexual Harm Prevention Order and was ordered to sign the Sex Offenders' Register for 10 years. This was reported in the Ipswich Star and East Anglian News.

11 August 2017 Dozens of people faced fines/ warning letters after being caught by speed checks. This photograph was taken on the Walton Road heading to Trimley St Mary.

